



GREAT ARIZONA PUPPET  
THEATER  
PRESENTS:  
*Creepy Crawly Wild & Woolly*  
STUDY GUIDE

Curriculum Tie-ins:  
Language Arts Science  
Art  
Music  
Performing Arts

CREEPY, CRAWLY, WILD & WOOLY is about four animals on the threatened or endangered species list in Arizona. This is an entertaining show that introduces students to the animals and the problems they face. Below are some suggestions to enrich the experience. Please use the activities that are appropriate for your group. Please send comments and suggestions for improving the program and this study guide to:

©Great Arizona Puppet Theater  
302 W Latham St  
Phoenix AZ 85003

## **BEFORE & AFTER THE SHOW:**

You'll be learning about some interesting Arizona animals. Here are some questions. You might know some of the answers now, and some you may learn the answers in the puppet show. (Teachers, this test may be used before and/or after the show to assess learning)

### **Pretest:**

What is a mammal?

What is a reptile?

How old must a desert tortoise be before it can reproduce (have babies)?

Why does a rattlesnake bite?

Can a rattlesnake bite kill you?

What should you do if you see a rattlesnake while hiking?

How many babies do bats have a year?

Do bats help the environment? If so, how?

What can people do to protect bats?

What does it mean when an animal is said to be "endangered"?

What does it mean when an animal is said to be "threatened"?

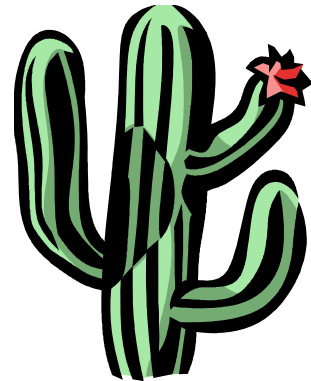
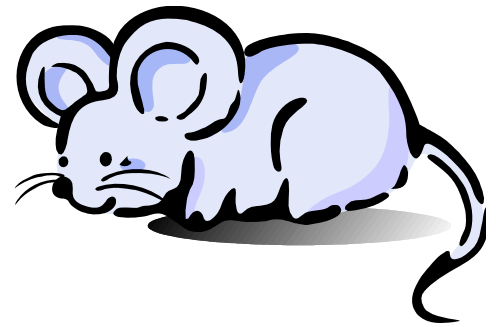
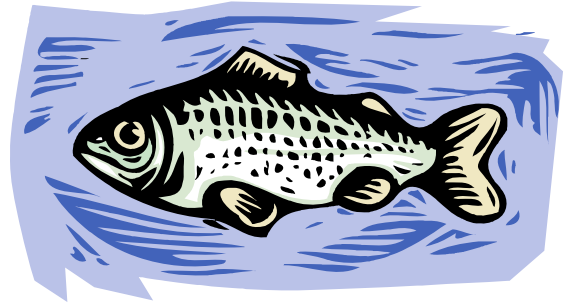
Should a desert tortoise be kept as a pet?

What can people do to protect desert tortoises?

What do bald eagles eat?

What can people do to protect bald eagles?

**ACTIVITY: MATCH THE ANIMAL TO ITS FOOD**



## MAMMALS:

A mammal is an animal whose body stays the same temperature all the time. Mother mammals feed their babies milk from their body and give birth to live young.

Circle the mammals!

